

# ASAHI

## STAINLESS STEEL INSERT BEARINGS

### MB SERIES NEWLY ADDED



JP-1973

ISO 9002  
JQA-1973

High anti corrosive, excellent for harsh corrosive environments.

Filled with FD-grease, ideal for food machinery.

Regreasable and with a locking pin on O.D.

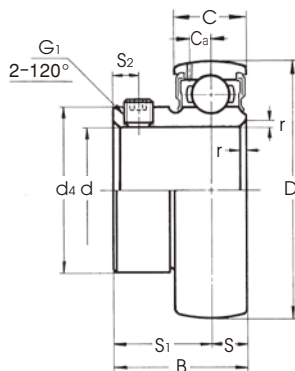
Designed to be mounted in thermoplastic housing as regreasable bearing unit.

Inner ring flush with outer ring on one side enables back seal to be fitted to flange type thermoplastic housings.



## ASAHI SEIKO CO., LTD.

## ● MAIN DIMENSIONS MB type Set-screw Locking



Shaft dia. (mm)	Bearing No.	Dimensions (mm)											Basic load rating (kN)		Weight (kg)
		d	D	B	C	r	S	S <sub>1</sub>	S <sub>2</sub>	G <sub>1</sub>	C <sub>a</sub>	d <sub>4</sub>	C <sub>r</sub>	C <sub>or</sub>	
20	MB4BGA-FD	20	47	24.7	14	1.5	7	17.7	4.5	M5×0.8	4.1	29	10.9	5.3	0.12
25	MB5BGA-FD	25	52	27	15	1.5	7.5	19.5	5	M6×0.75	4.1	34	11.9	6.3	0.16
30	MB6BGA-FD	30	62	30.3	16	1.5	8	22.3	5	M6×0.75	4.9	40.5	16.7	9	0.25
35	MB7BGA-FD	35	72	32.9	17	2	8.5	24.4	6	M8×1	5.4	48	22	12.3	0.38
40	MB8BGA-FD	40	80	35.5	18	2	9	26.5	8	M8×1	5.9	53	24.9	14.3	0.49

## ● TOLERANCES

### Tolerances on inner rings

(Unit : μm)

Nominal bore diameter d (mm)		Deviation of mean bore diameter in plane of inner ring ∠dmp		Variation of bore diameter in plane of inner ring Vdp	Deviation of inner ring width ∠Bs (reference)		Radial runout of inner ring Kia (reference)	Eccentricity deviation of inner ring and eccentric locking collar ∠Hs
Over	Incl.	High	Low	Max.	High	Low	Max.	
10	18	+15	0	10	0	-120	15	±100
18	31.75	+18	0	12	0	-120	18	
31.75	50.8	+21	0	14	0	-120	20	

### Tolerances on outer rings

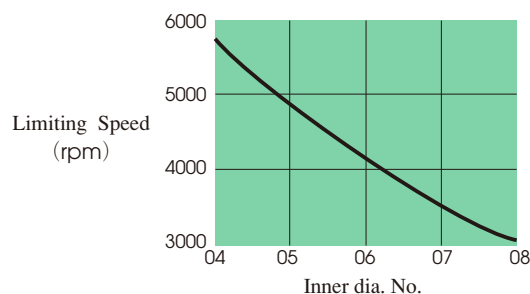
(Unit : μm)

Nominal outside diameter D (mm)		Deviation of mean outside diameter ∠Dm		Radial runout of outer ring Kea (reference)
Over	Incl.	High	Low	Max.
30	50	0	-11	20
50	80	0	-13	25

## ● RANGE OF OPERATING TEMPERATURE

-15 ~ +100°C

## ● LIMITING SPEED



## ● MATERIALS

Parts	Materials	(JIS) Japanese Ind. Standard	
		Symbol	Code
Bearing	Stainless steel	SUS440C	G4303
		SUS304	G4303
		—	K6380
	Nitril	—	K6380

Remark : Only in case of size no.4 of MB series bearing inserts, bearing's re-lubrication hole does not well match to housing's re-lube hole, so it not suitable for re-lubrication.

# ASAHI SEIKO CO., LTD.

FOREIGN TRADE DEPARTMENT : 570-1, Otori-Higashi-machi 6-cho, Sakai City, Osaka 593-8324, Japan

Tel : (0722)72-6900

Fax : (0722)72-6903

e-mail address : ex-1@asahiseiko.co.jp (North America, East Asia & Oceania Section)

e-mail address : ex-2@asahiseiko.co.jp (Europe, Africa, Southeast Asia & Middle East Section)

e-mail address : ex-3@asahiseiko.co.jp